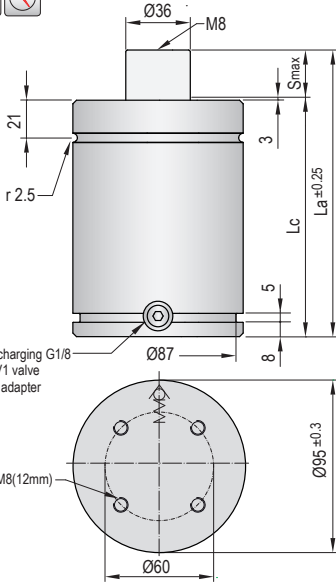




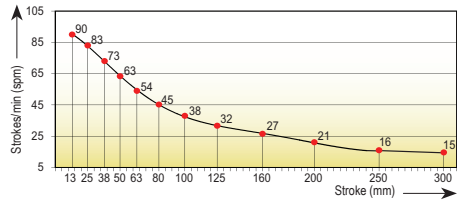
VDI SAFETY



- i** Pressure medium Nitrogen (N₂)
- Max. charging pressure 150 Bar
- Min. charging pressure 35 Bar
- Rod seal area 10,18 cm²
- Operating temperature 0°C - 80°C
- Force increase by temperature 0,33 %/°C
- Max. stem speed 1,6 m/s
- Maintenance kit Kit B1500

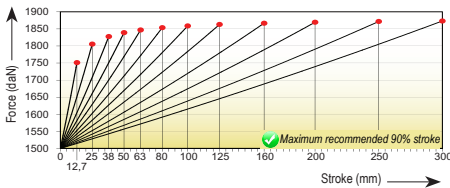


Maximum strokes / minute (at 20°C)

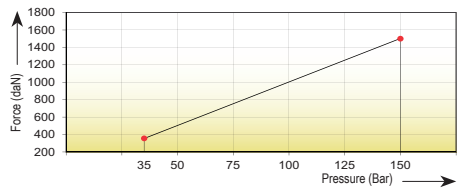


Code	Smax mm	La mm	Lc mm	Fa daN	90% F daN	100% Fc daN	P Bar	V l	Kg
TPB 1500x13	12,7	135,4	122,7	1500 ±5% (20°C)	1730	1760	148 (20°C)	0,090	5,25
TPB 1500x25	25	160	135		1775	1815		0,150	5,50
TPB 1500x38	38	186	148		1795	1835		0,216	5,90
TPB 1500x50	50	210	160		1805	1845		0,276	6,28
TPB 1500x63	63	237	174		1815	1855		0,341	6,60
TPB 1500x80	80	270	190		1820	1860		0,427	7,05
TPB 1500x100	100	310	210		1825	1865		0,527	7,65
TPB 1500x125	125	360	235		1825	1870		0,653	7,90
TPB 1500x160	160	430	270		1830	1875		0,829	8,98
TPB 1500x200	200	510	310		1830	1880		1,030	10,05
TPB 1500x250	250	610	360		1835	1880		1,281	11,65
TPB 1500x300	300	710	410		1835	1880		1,533	14,60

Force/stroke ratio



Initial force/charging pressure ratio



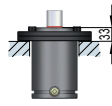
Assembly possibilities



DROP-IN



SCREWS



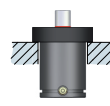
FS 95-FSC 95



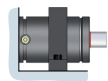
FP 95-FPR 95



FB 95



FRS 95



FI 95-FI 95/1